

ANGLE AND PLATE REPLACEMENT AT WIND TONGUE ON MAIN TOWERS
FOR MAIN AND SIDE SPANS - 8 REQ'D Scale 1" = 1'-0"

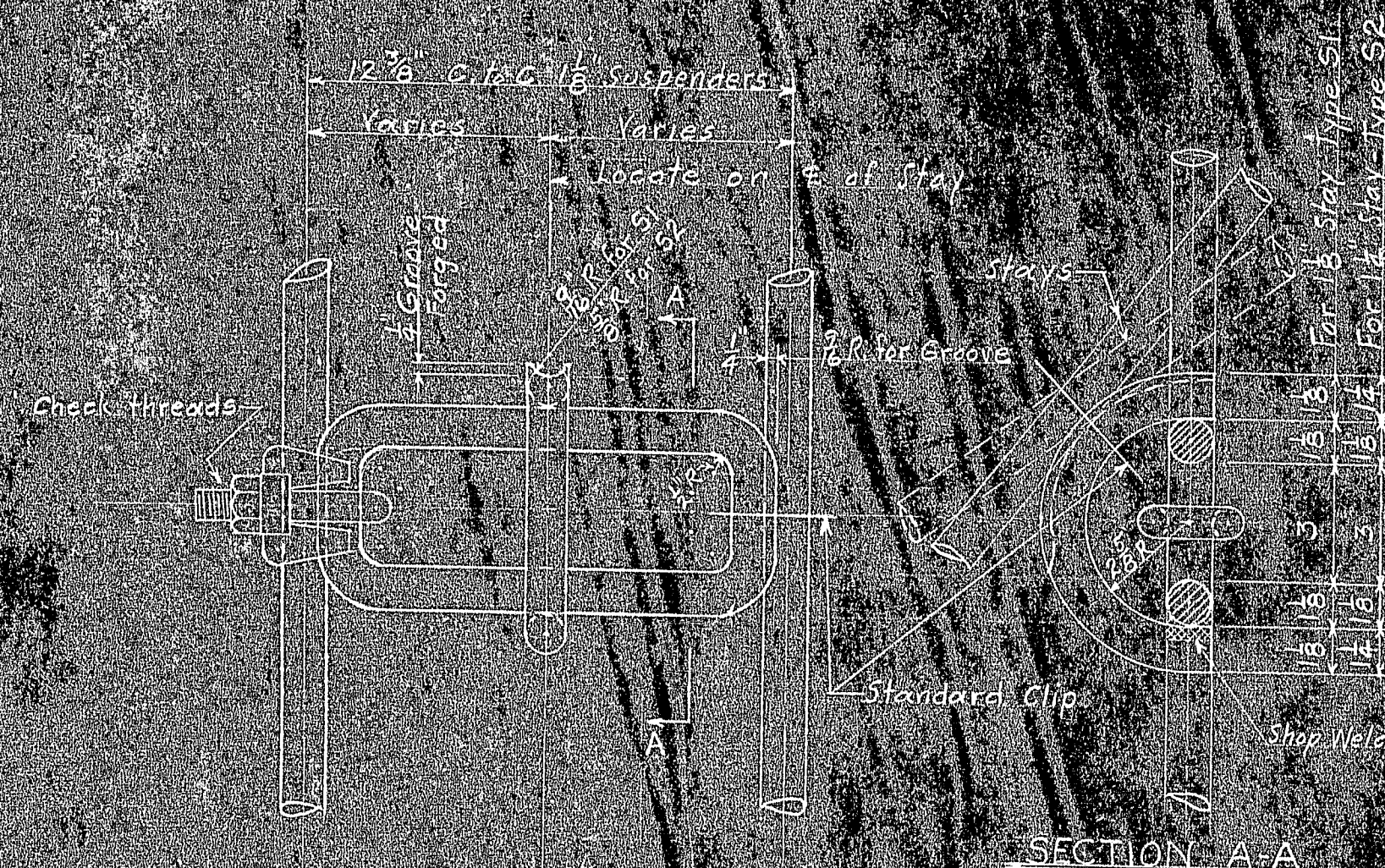
New material for One Bracket

One L 8x6 x 5/8 x 0'-9"
One Plate 8x1 1/2 x 0'-9"

4 Rivets

Knock out 4 rivets, remove existing angle and plate, adjust new angle and plate for .01" clearance on tongue, with bridge centered transversely, drill 4 holes in new angle, drive 4 rivets and weld new angle to old $7 \times 3 \frac{1}{2}$ " angle to develop full bearing.

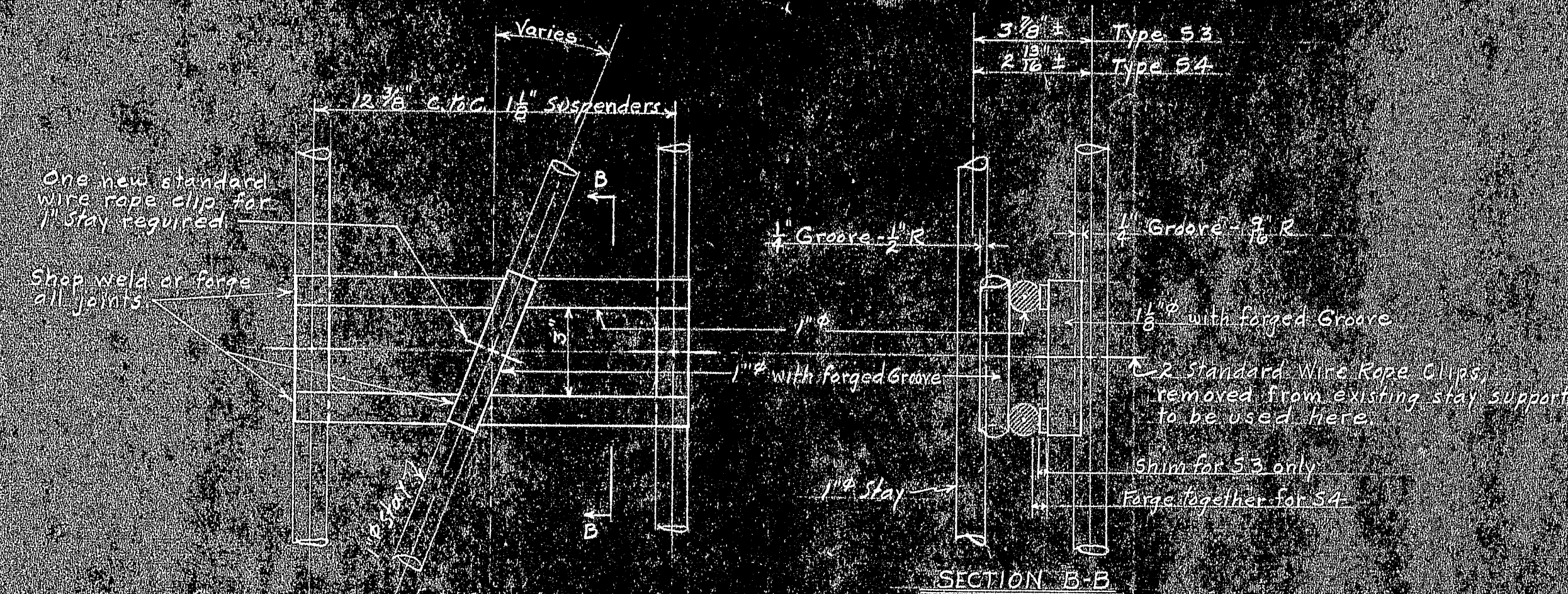
PHOSPHOR BRONZE BUSHINGS - 8 REQUIRED
FOR MAIN SPAN GIRDER EXPANSION BEARINGS
Scale 3" = 1'-0"



SUPPORTS FOR TOWER STAYS - PANEL POINTS 15, 16, 18 & 19

SCALE 3 1-0 REQD - 16 SUPPORTS - TYPE 6
32 5

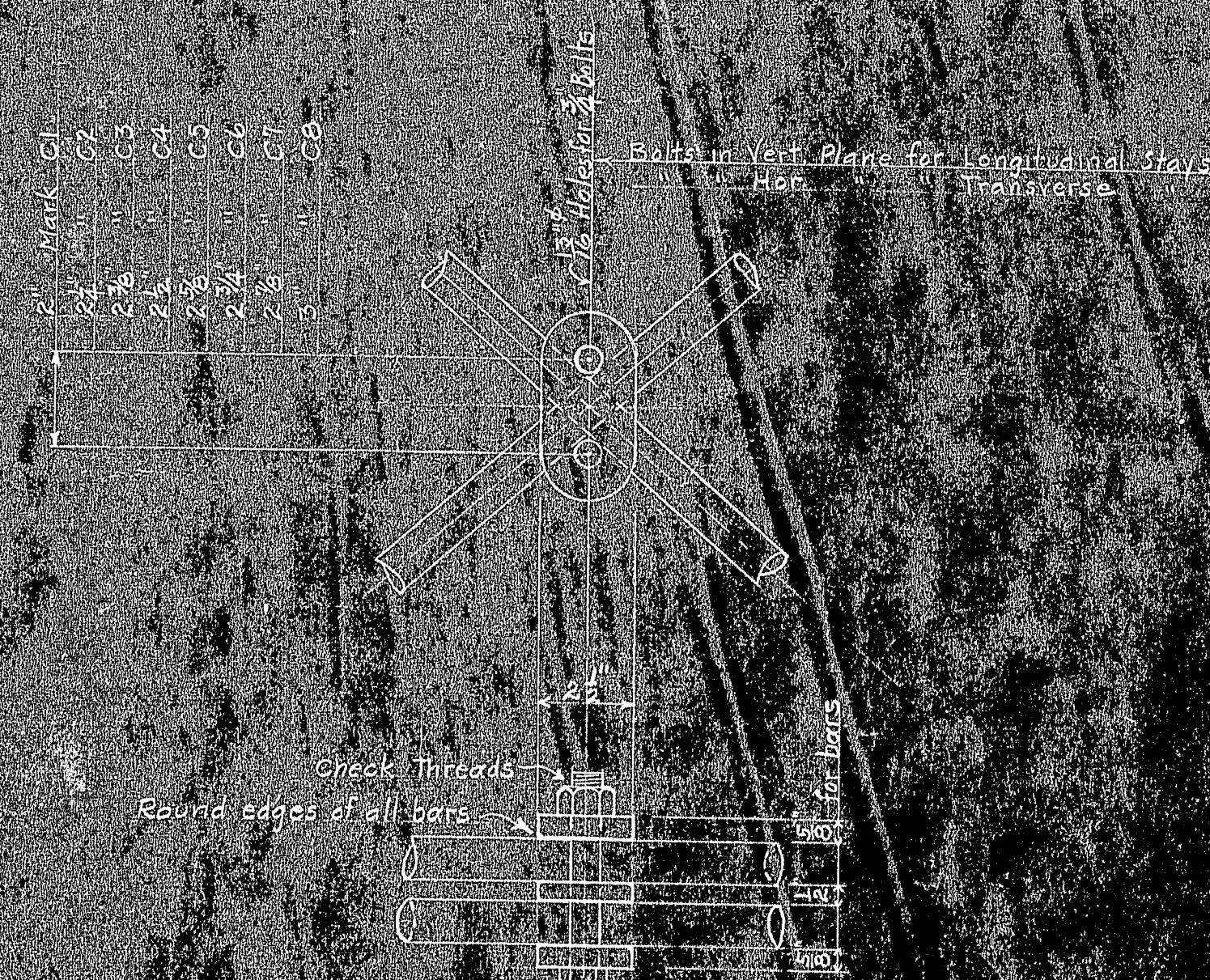
NOTE Wire Rope Clips removed from existing stay supports,
shall be used for these supports.



SUPPORTS FOR TRANSVERSE STAYS AT INTERSECTIONS WITH SUSPENDERS

SCALE: 3" = 1'-0"

REQ'D	#	SUPPORTS	TYPE	S3	PANEL	POINTS	10	11
	12			54			22	23



CLAMPS AT INTERSECTIONS OF ALL STAYS

SCALE 3-10	REQUIRED	
10	C	
8	C	
10	C	
50	C	
40	C	
36	C	
8	C	
8	C	

NOTE:
Supports 51, 52, 53 and 54, and clamps C to CB inclusive shall be galvanized and not painted.

STATE OF MAINE
STATE HIGHWAY COMMISSION

DEER ISLE-SEDGWICK BRIDGE
REINFORCEMENT WITH CABLE STAYS

DETAILS

ROBINSON & STEINMAN
CONSULTING ENGINEERS
NEW YORK CITY

DRAWING NUMBER
RS 4207 - 5
FEBRUARY 26, 1943

